

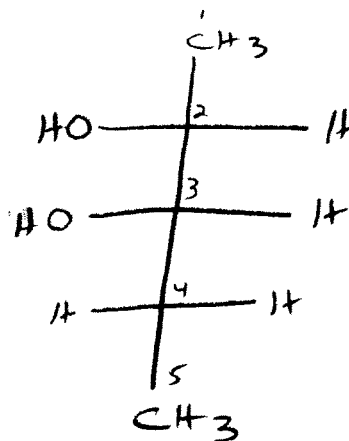
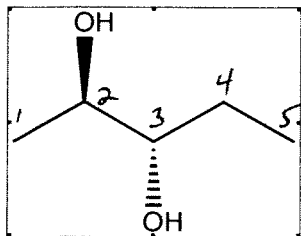
Stereochemistry 4

Key

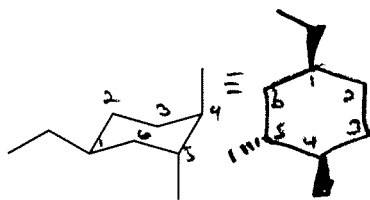
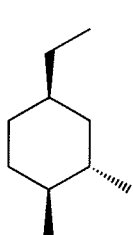
1. Consider the molecule below.

A) Label each stereocenter as R or S.

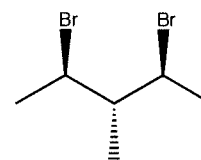
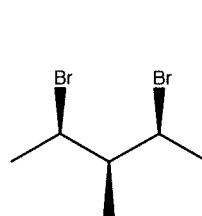
B) Depict the molecule as a Fischer Projection:



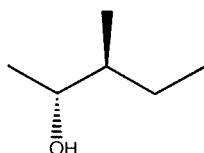
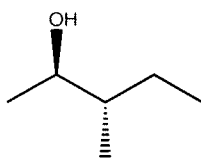
2. For the following pairs of structures, indicate their relationship as the same compound (SAME), enantiomers (EN), diastereomers (DIA), structural isomers (SI), *cis-trans* isomers (a special form of diastereomers).



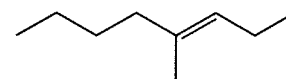
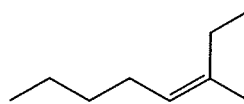
enantiomers



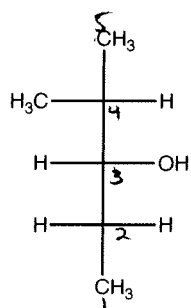
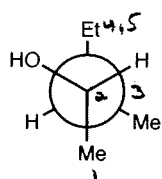
diastereomers



same



structural isomers



structural isomers