

# Cancer Topics

- 1) cancer cells
- 2) cancer stages
- 3) cancer causes
- 4) detection & treatment
- 5) diseases

# Char. of Cancer Cells

- 1) primitive cells (lack differentiation)**
- 2) big (abnormal) nuclei**
- 3) fast growth (unlimited replication )**
- 4) aggressive growth (tumors)**
- 5) not inhibited (ignore growth factors)**
- 6) become abnormal (disorderly shape)**
- 7) forms new blood vessel (angiogenesis)**
- 8) travels to new site (metastasis)**

# Terms

## 1) cancer

- disease of uncontrolled cell growth
- usually caused by gene mutations

## 2) apoptosis

- programmed cell death, absent in cancer

## 3) metastasis

- malignant cancer cells moves to new site (spreads)

## 4) angiogenesis

- new blood vessels to support cancer cells

## 5) oncology - study of cancer

## Cancer Stages (2)

- a&b) mutation - genetic alteration**
- c) tumor - hyperplasia & dysplasia, fast & wrong growth**
- d) invasive tumor - in situ cancer**
  - removed by chem. peeling, freezing, or scraping**
- e) malignant tumor - invade blood & lymph vessels**
- f) distant tumor - cancer travels to new site**
  - metastasis; colon to lung cancer**

# Cancer Causes

- 1) mutant genes**
- 2) heredity (inheritable susceptibility)**
  - breast, ovarian, eye, thyroid cancers**
- 3) environment**
  - radiation, smoke, pollutants, viruses**
- 4) dietary choices & exercise**
  - high fat, red meat, fruits & veg, exercise**
- 3) age - repair mech. wear out**
- 4) random - unknown causes**

# Cancer from Gene Mutations

- 1) proto-oncogenes**
  - lose ability to regulate growth**
  - > fast growth -> cancer**
  
- 2) tumor suppressor genes**
  - lose ability to suppress growth**
  - > fast growth -> cancer**
  
- 3) mutator genes**
  - lose ability to recognize DNA repair problems -> cancer**

# Environment - Carcinogens

## 1) radiation

- **Ux-rays, UV (sunlight), radon gas (uranium)**

## 2) chemicals/pollutants

- **tobacco smoke, soot, asbestoes, dyes, pesticides**

## 3) virus

- **HPV (human papillomavirus ) (cervix & penis)**
- **hepatitis: B & C (liver)**
- **HIV (immune sys)**
- **epstein-barr (immune sys)**

## 3) diet - red meat, saturated animal fat

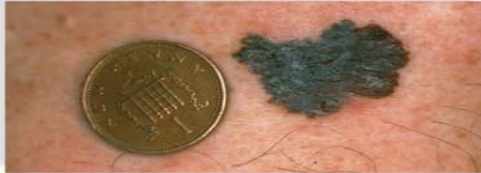
# Detection

- 1) **self exam - ABCDE, breast, testes**
- 2) **medical images - x-ray, PET, MRI**
  - +: detect tumors**
  - : cost, and side effects**
- 3) **tumor marker tests**
  - blood tests for antigens, antibodies**
- 4) **genetic test**
  - +: knowledge of disease potential**
  - : controversial, insurance issues**



# ABCDE

Copyright © The McGraw-Hill Companies, Inc. Permission required for reproduction or display.



**A = Asymmetry:** one-half of mole does not look like the other half.



**B = Border:** irregular scalloped or poorly circumscribed border.



**C = Color:** varied from one area to another; shades of tan, brown, black, or sometimes white, red, or blue.



**D = Diameter:** larger than 6 mm (the diameter of a pencil eraser).



**E = Elevated:** above skin surface, and **evolving**, or changing over time

A: © Custom Medical Stock Photo; B: © ISM/Phototake;  
C: © Dr. P. Marazzi/Photo Researchers; D: © Custom Medical Stock Photo;  
E: © Dr. Ken Greer/Visuals Unlimited

## Asymetry

- irregular shape

## Border

- irreg. border

## Color

- darker

## Diameter

- larger

## Elevate/Evolve

- protrudes

- changes

# Treatment

**approx. 50% cure**

## **1) conventional**

- surgery, radiation, chemotherapy, bone marrow transplant**
- +: remove cancer cells**
- : tough, side effects, low chances**

## **2) new (review text)**

- immune therapy**
- angiogenesis**
- gene therapy**

# HeLa Cells - Research

## Henrietta Lacks

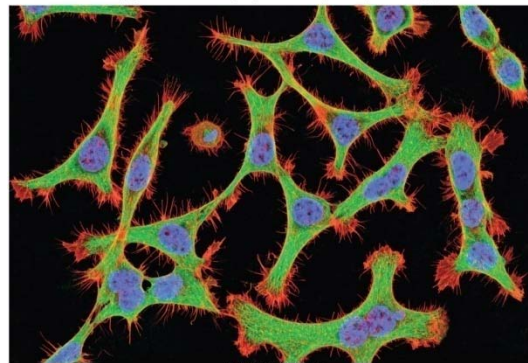
- 1951 cervical cancer cells
- reliable, grows fast, sturdy, 65 years
- polio vaccine
- crucial to human disease research (polio, virus, leukemia, cancer)
- space experiments & world-wide
- not financially benefit her family

Copyright © The McGraw-Hill Companies, Inc. Permission required for reproduction or display.



© Obstetrics & Gynecology/SPL/Photo Researchers

Copyright © The McGraw-Hill Companies, Inc. Permission required for reproduction or display.



© Visuals Unlimited/Corbis

HeLa cells

# **Diseases (cancer)**

**Review the symptoms and treatments:**

- 1) skin**
- 2) prostate**
- 3) breast**
- 4) lung**
- 5) colon & rectum**
- 6) lymphoma**
- 7) urinary bladder**
- 8) uterus**
- 9) kidney**
- 10) leukemia (WBC)**