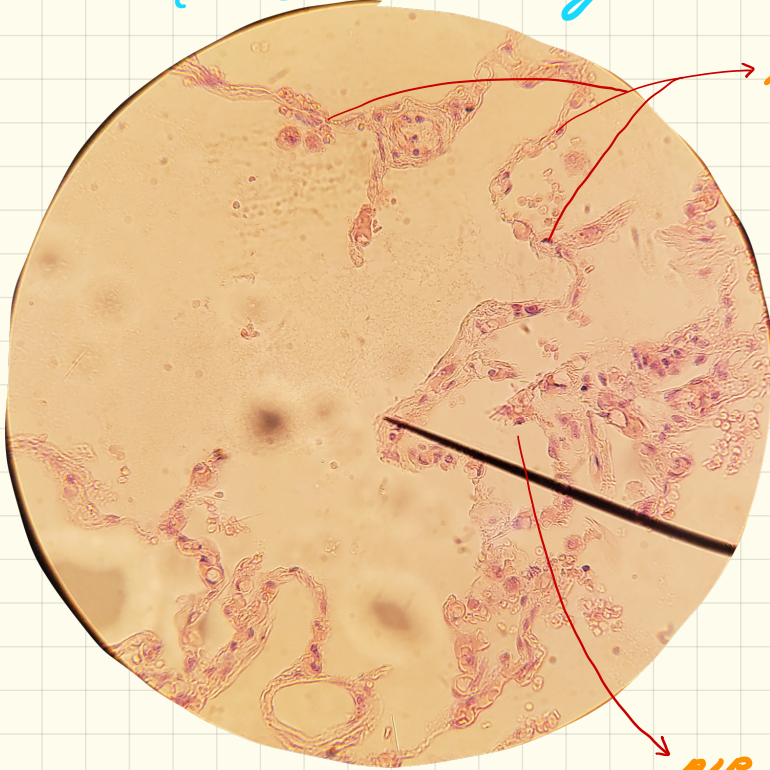


# Simple Squamous

**FUNCTION** → allows materials to pass through by diffusion & filtration, and acts as lubricating substance

**LOCATION:** air sac of lung, linings of: heart, blood vessels, & lymphatic vessels, kidney glomeruli

Slide 29: lung

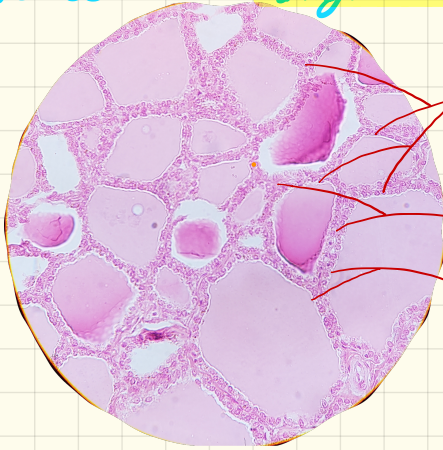


NUCLEI

AIR SAC  
OF LUNG  
TISSUE

# Simple Cuboidal

slide 34 - Thyroid gland of monkey



SIMPLE  
CUBOIDAL

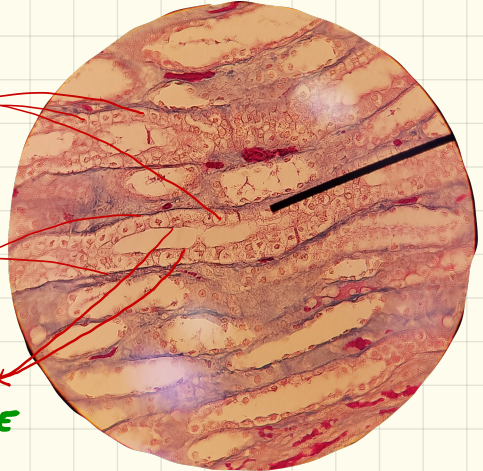
BASEMENT  
MEMBRANE

APICAL  
SURFACE

**FUNCTION :** secretes & absorbs

**LOCATION :** in ducts ; secretory portions  
of small glands, kidney tubules

slide 6 - Human kidney



SIMPLE  
CUBOIDAL

BASEMENT  
MEMBRANE

APICAL  
SURFACE

# Simple Columnar

**FUNCTION:** absorption;  
secretion of mucus;  
enzymes

**LOCATION:** **CILATED** -  
bronchi, uterus,  
uterine tube  
(SMOOTH)  
**NONCILATED** - digestive  
trac. bladder

APICAL  
SURFACE

BASEMENT  
MEMBRANE

SIMPLE  
COLUMNAR

GOBLET CELLS

SLIDE 3: SMALL  
INTESTINE  
+ GOBLET  
CELLS

SIMPLE  
COLUMNAR

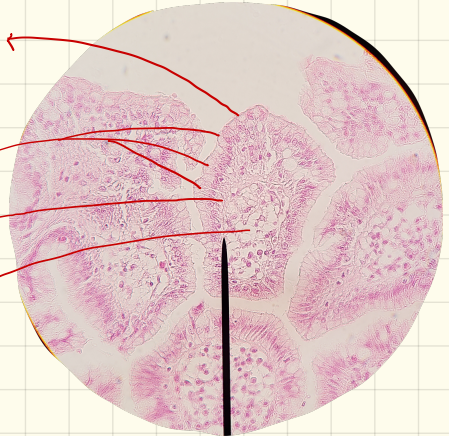
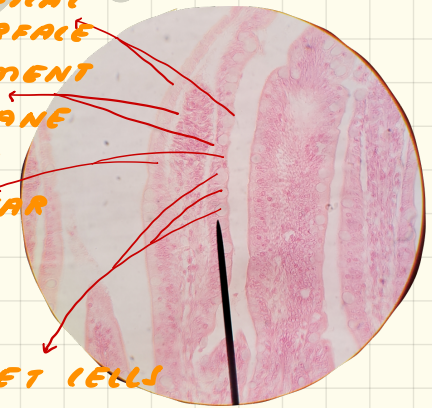
BASEMENT  
MEMBRANE

SLIDE 21: STOMACH  
PYLORIC

APICAL  
SURFACE

SIMPLE  
COLUMNAR  
BASEMENT  
MEMBRANE

ADIPOSE  
TISSUE

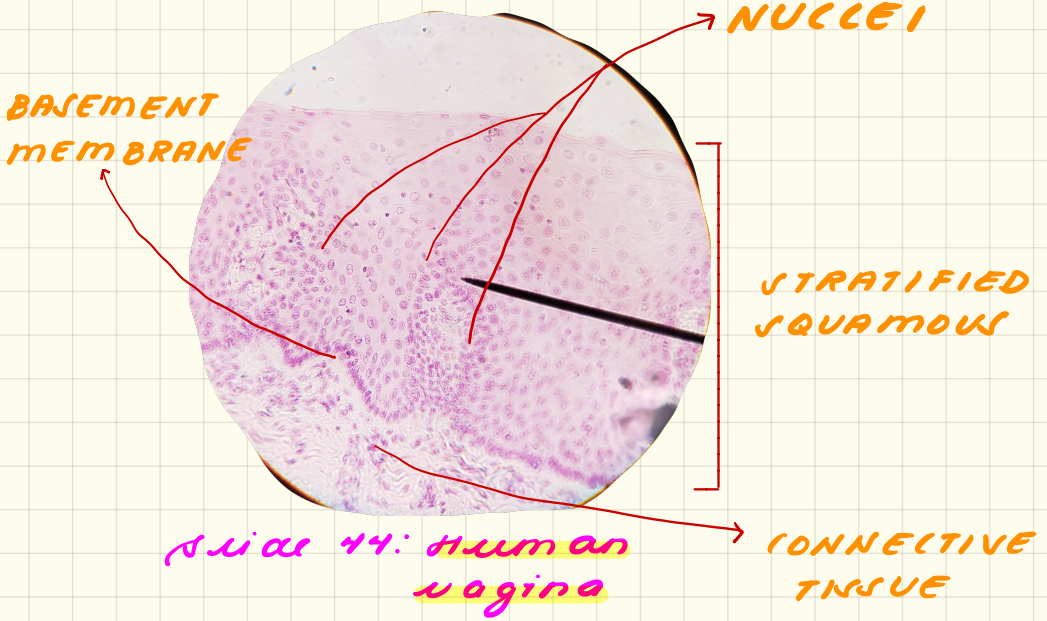


# NON-KERATINIZED STRATIFIED SQUAMOUS

infection

**FUNCTION:** PROTECTS AGAINST ABRASION

**LOCATION:** ESOPHAGUS, MOUTH, VAGINA



# Keratinized Stratified Squamous

2 THIN - SKIN OF MONKEY



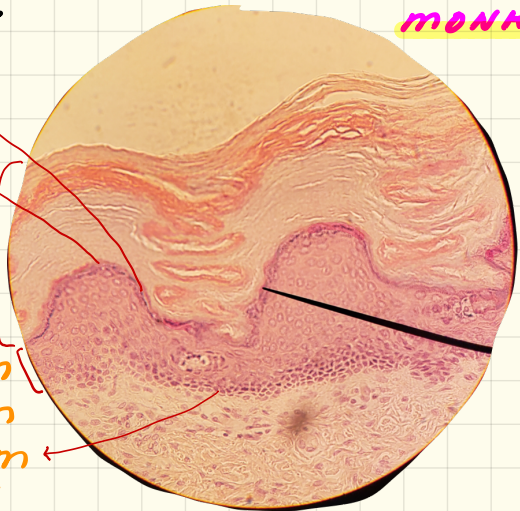
STRATUM  
GRANULOSUM  
STRATUM  
CORNEUM  
STRATUM  
SPINOSUM  
STRATUM  
BASALE

FUNCTION: PROTECTS  
AGAINST ABRASION

LOCATION: HAIR &  
NAILS SURFACE  
OF THE EPIDERMIS

43 THICK - PALM OF  
MONKEY

STRATUM  
GRANULOSUM  
STRATUM  
LUCIDUM  
STRATUM  
CORNEUM  
STRATUM  
SPINOSUM  
STRATUM  
BASALE

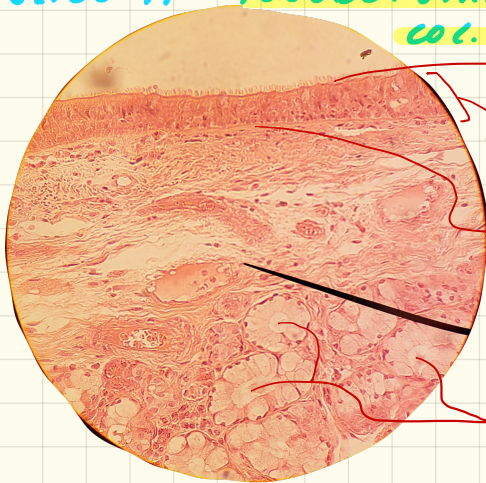


# Pseudostratified Ciliated Columnar

**FUNCTION:** secrete mucus; ciliated tissue move mucus

**LOCATION:** Trachea + much of the upper respiratory tract

SLIDE 41 - PSEUDO-STRATIFIED COL.



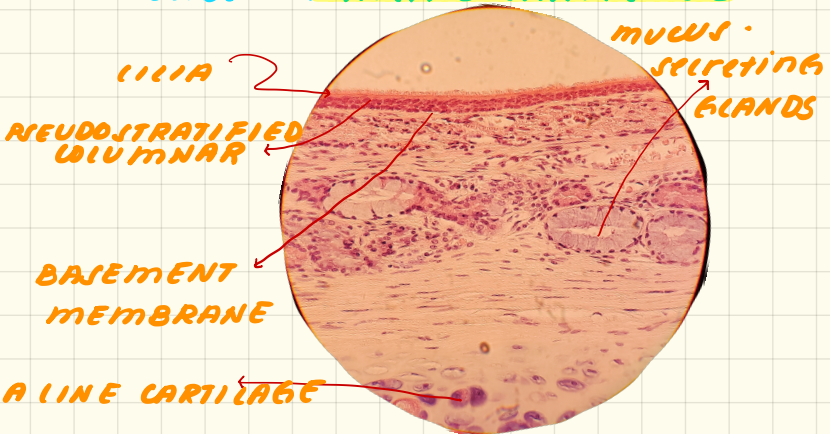
CILIA

PSEUDOSTRATIFIED COLUMNAR

BASEMENT MEMBRANE

MUCUS-SECRETING GLANDS

SLIDE 4: HYALINE CARTILAGE



CILIA

PSEUDOSTRATIFIED COLUMNAR

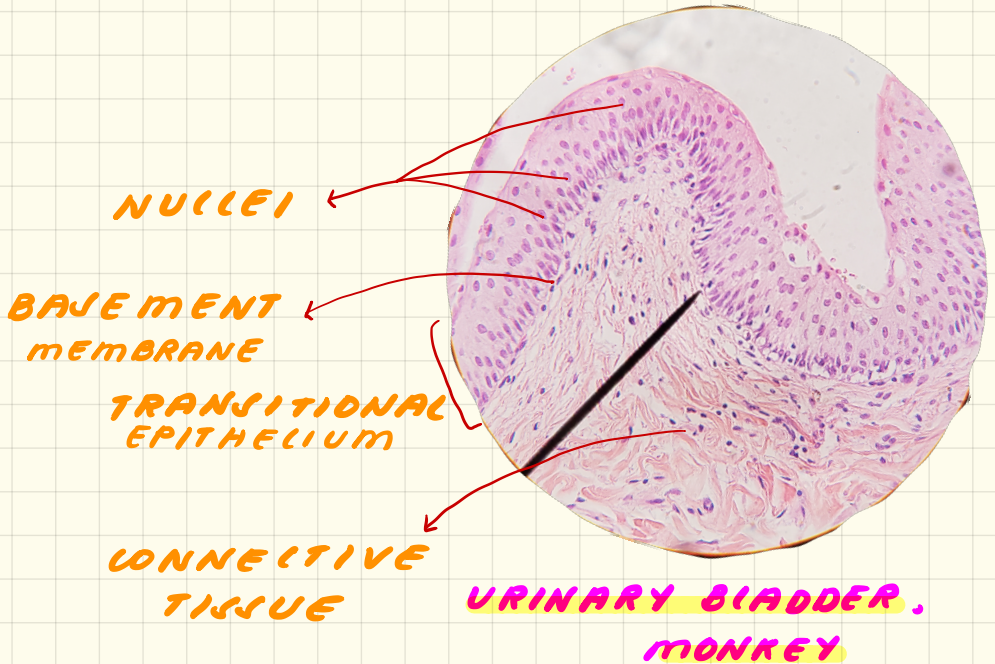
BASEMENT MEMBRANE

HYALINE CARTILAGE

MUCUS-SECRETING GLANDS

# Transitional Epithelium

**FUNCTION:** elasticity; stretch & recoil  
**LOCATION:** lines the bladder, ureters,  
& urethra



By Flordeliza Perlas (anatomy student), Fall 2018